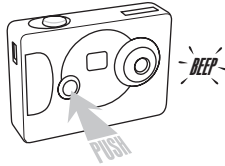
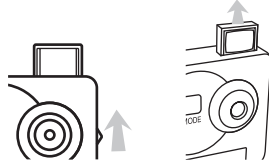


## 2 Camera Use - continued

**1** Push the 'Function' button to turn the camera on.



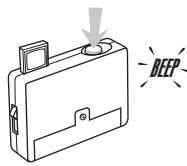
**2** Slide the viewfinder up.



**3** Compose your picture in the viewfinder.



**4** Hold the camera steady. Slowly press the SHUTTER button.



The camera will beep  
The LCD will count down by 1.

## ! Important Information

- \* Your camera needs lots of light to take good photos.  
*Sunlight. A brightly lit room.*
- \* The camera's viewfinder is a little different from most. Holding the camera 6 to 10 inches away from your eye works best.
- \* All images in the camera will be lost if the battery is removed or is very weak.  
*Transfer your photos to the computer as soon as you can after taking pictures.*
- \* Your camera is sensitive to movement.  
*Try to keep your hands as still as you can while you are taking your pictures.*

## Camera Functions

Press Function Button	LCD Display	Plus	Function	Recommended Setting
(1X) OF	+		turns camera off <small>Camera shuts off automatically after 20 seconds</small>	N.A.
(2X) St	+		10 second timer	N.A.
(3X) dB	+  Hold		shoot movie <small>Release shutter to stop shooting</small>	N.A.
(4X) CS	+  Hold 5 s		continuous shoot 3 images	N.A.
(5X) CR	+  Display blinks		clears all images in camera	N.A.
(6X) CL	+		clears last image in camera	N.A.
(7X) Hi/Lo	+		switches image compression between Hi and Lo*	Lo
(8X) 60/50	+		switches camera between 60 Hz and 50 Hz	60

\* Lo Compression (Hi Quality) = 352 x 288 pixels  
4.889 x 4 inches @ 72 ppi  
18 pieces (CIF)

Hi Compression (Lo Quality) = 176 x 144 pixels  
2.44 x 2 inches @ 72 ppi  
64 pieces (QCIF)



function button

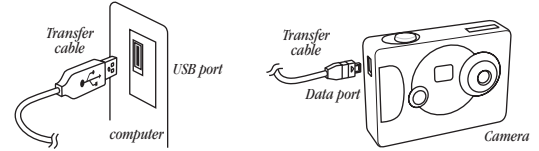
Example:

*The camera is full. You have transferred your pictures to your computer. You now want to clear all of the images in the camera. Push the function button five times until you see the CA in the LCD. Click the SHUTTER button once, then a second time. All the images have been cleared from the camera.*

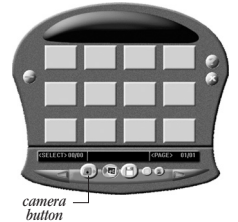
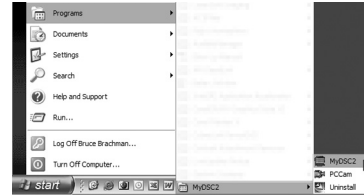
## 3 Transfer Images to Computer

Make sure the camera has images in its memory and the camera driver/transfer software has been installed.

1. Plug the appropriate end of the transfer cable into an open USB port.
2. Connect the other end into the data port on the camera. (the connector is 'keyed' so it will only fit into the port one way.)



3. From the Windows Start Menu select **Programs > MyDSC2 > MyDSC2**. The transfer program will start.



4. Click the 'Camera' button. The program will display small images of all the pictures in the camera.



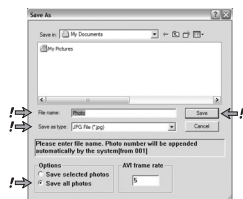
5. Click the 'Save' button. A dialogue window will open.

Navigate to the directory you wish to save your pictures. In the filename dialogue, type a name. This name will be the beginning of each photo with a number added. (Example: type 'Party'. The photos will be named, Party001, Party002 etc.)

Select either JPEG or BMP as your file format.

Be sure to select 'Save all photos' at the bottom.

When you are ready, click 'Save'.



### OPTIONAL

#### Editing and printing your photos

Your photos have now been saved to your computer. You can clear all the photos from the camera, take more, then repeat the steps to transfer the images.

When you are ready to use your photographs, you can edit and print them with any image editing software on your computer.

If you do not own image editing software or you wish to try something different, you can install the image editing software included on the CD.

**Arcsoft Photo Impression V4.0** has been included on the installation CD.

Insert the CD into your computer's CD-ROM drive. When the install window appears, select the top option. **ArcSoft Imaging Software**.

Follow the on-screen instructions.

<http://www.arcsoft.com/products/photoimpression/>

#### Webcam

The mini digital camera can be used as a webcam. (Camera driver must be installed)

1. Connect the mini digital camera to the USB port on the computer with cable.
2. Windows 98, 98SE, ME, 2000 and XP include **Microsoft Netmeeting**. If using for first time, select **START > HELP**. Type 'Netmeeting'. Follow onscreen instructions for setup.
3. After Netmeeting has been setup, run the program.